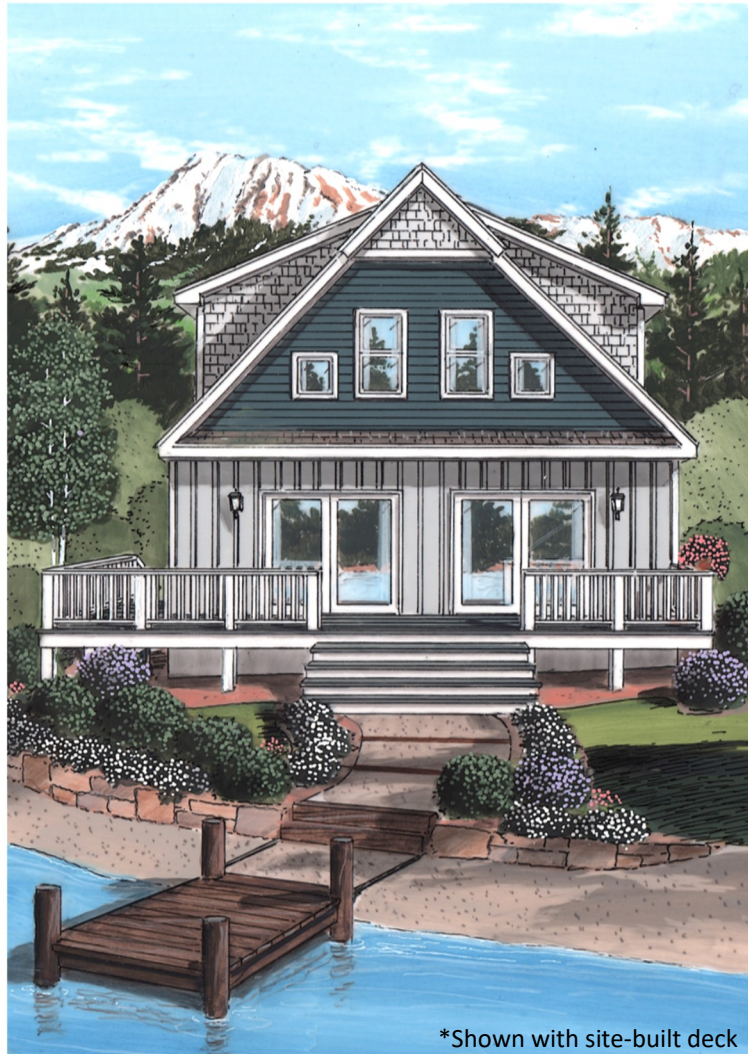


# HOUSE of the MONTH

April 2018



\*Shown with site-built deck

The Ashford Cape can make the most of a mountain or water view home site. On the main level, the kitchen, dining and living areas of this open floor plan enjoy the views through the wide patio doors. The first floor also features a nicely sized Master Suite with a large custom vanity, a compartmented toilet/shower area and unique bow-front, tiled shower. An upper level Loft room with a balcony view of the living room below, two nicely sized bedrooms and a large full bath round out the upper level space.

## The Ashford Cape

*An American Dream Collection*

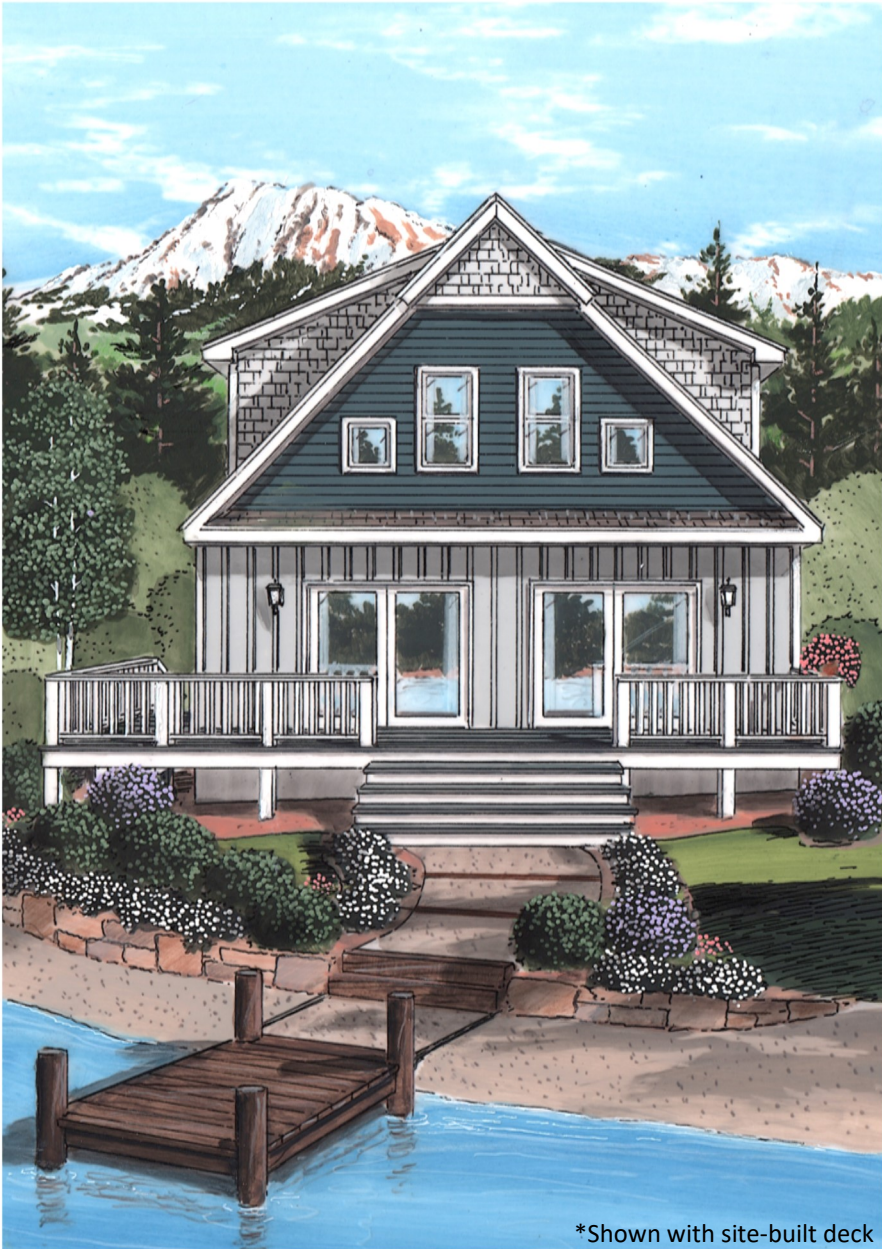
- ♦ 4 Module Cape with completed 2nd floor, Standard Shed Dormers
- ♦ 1813 sq. ft. Living Area



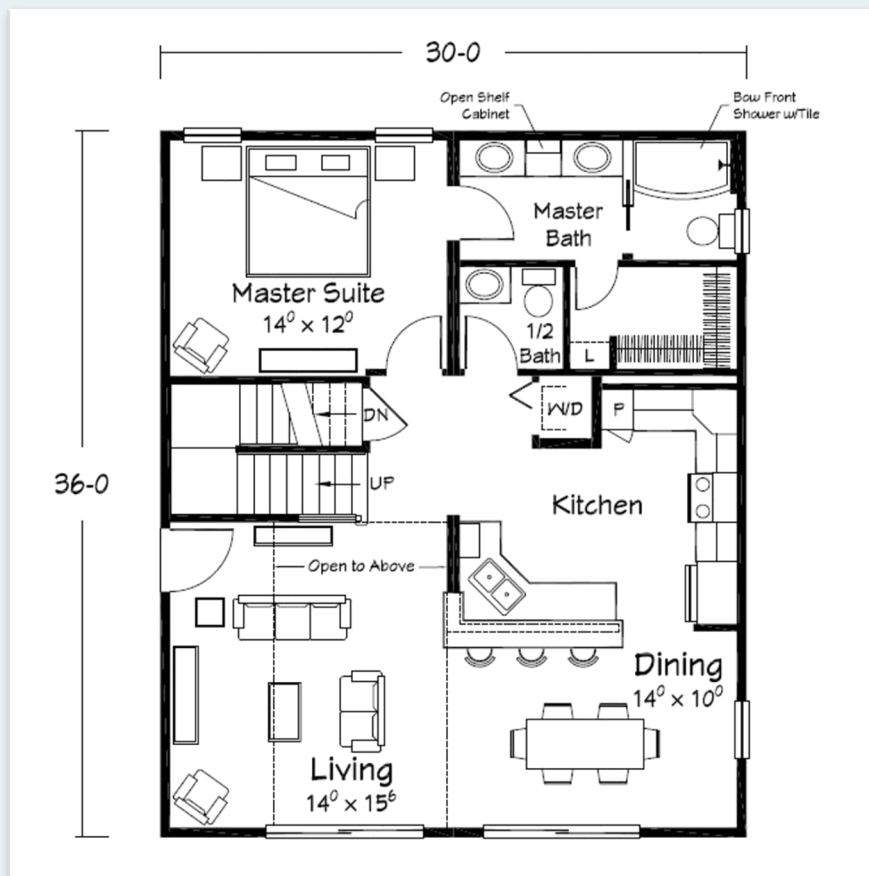
# The Ashford Cape

## Included Exterior Features

- (2) 8' wide sliding patio doors
- Operable awning windows for front upper gable per plan
- Full shingled eave return at front gable
- Box prow at front gable
- Integral shed dormers per plan
- Vinyl board and batten siding for first floor front areas
- ♦ Vinyl "Portsmouth" shake siding for 3 sides of shed dormers and for top of upper front gable (in box prow area)





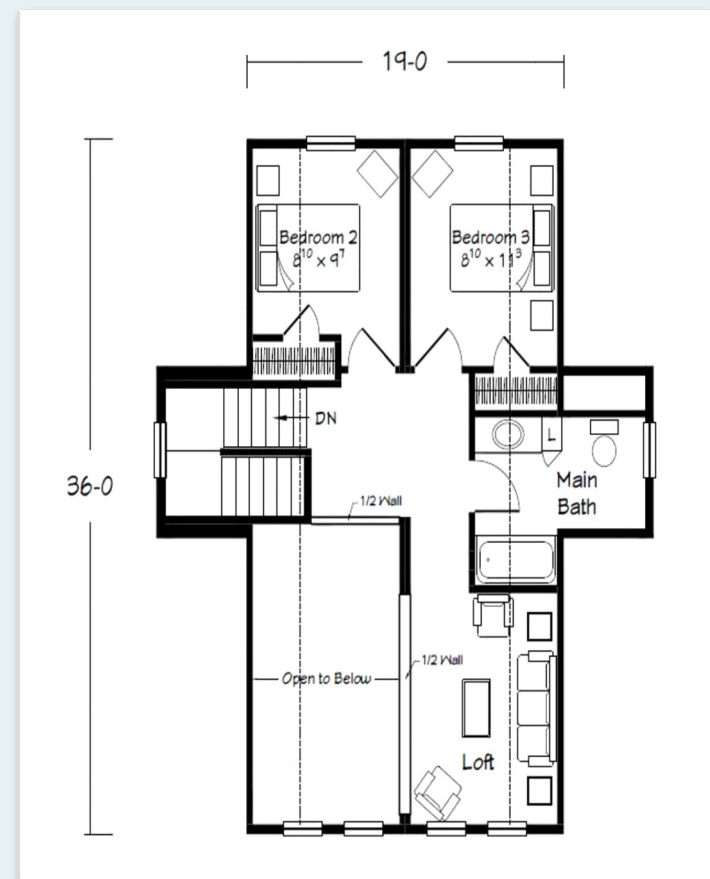


### Included Interior Features

- 8'-6" ceiling height first floor--8'-0" second floor
- (6) recessed kitchen ceiling lights (includes 1 centered over sink)
- (2) hanging pendant lights over raised bar
- Tall/Deep refrigerator overhead cabinet, range overhead cabinet and corner wall cabinet
- Tall Pantry cabinet

## The Ashford Cape

*An American Dream Collection*



- MANNINGTON "Adura" LVP in Kitchen, Dining, Living, 1st floor Hall and W/D areas
- NAFCO vinyl flooring in all baths
- "Prairie Style" stair railing at partial open 1st floor stair area
- Half-wall areas with wood caps per plan
- Pocket door per plan in Master bath
- ♦ FLEURCO acrylic "bow-front" shower pan with tiled walls and chrome roller shower door



# The Ashford Cape

*An American Dream Collection Plan*

