

Pillar

INNOVATIONS

ELECTRIC & AUTOMATION

- PLC & Robotic Programming
- Electrical Engineering Panel Design & Fabrication
- Machine Design, Fabrication, & Retooling
- Machine Vision
- Instrumentation & Calibration
- Networking
- Field Service & Troubleshooting

PLC & Robotic Programming

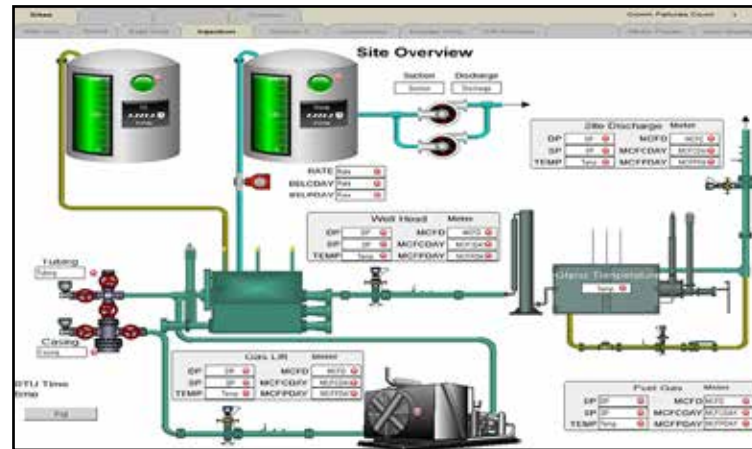
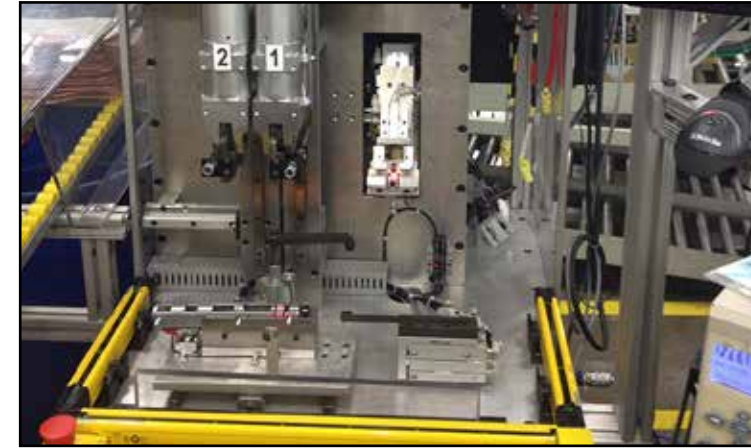
- PLC Experience

- Allen Bradley
- Schneider Electric
- Siemens
- Omron
- Mitsubishi
- Proface
- Beckhoff
- Toyopuc
- Horner

- Robot Experience

- Fanuc
- Motoman/Yaskawa
- ABB
- Mitsubishi
- Denso
- Yamaha

- HMI/MMI/SCADA Design & Configuration



Electrical Engineering, Panel Design & Fabrication

- Panel Design & Fabrication

- UL 508A listed Panel Shops
- NFPA 70E
- Hazardous location design & fabrication
 - ATEX
 - MSHA

Machine Design, Fabrication, & Retooling

- Custom machines from concept to production
- 100,000 sq.ft. fabrication shop
- Engineering & design



Machine Vision

- Programming, Training, Setup, Troubleshooting, Commissioning
- Experience
 - Cognex
 - Keyence
 - Banner

Instrumentation & Calibration

- Protocols

- HART
- 4-20ma
- Modbus
- 0-5/10V

- Applications

- Flow
- Pressure
- Temperature
- Level/Position
- Water Quality
- Atmospheric

Networking

- From in-plant networking to remote wireless links

- Protocols

- TCP/IP
- Ethernet IP
- DeviceNet
- EtherCAT
- CClink

- Media

- Fiber Optics
- Copper
- Wireless PTP/PTMP

Field Service & Troubleshooting

- 24/7 support

- Safety

- Over 3.5M man hours without a lost time accident (7/15)
- Qualifications
 - TUV
 - MSHA
 - Safeland/Safegulf





P. 301.245.4007

F. 301.245.4009

www.pillarinnovations.com • info@pillarinnovations.com

333 Corporate Drive
Grantsville, MD 21536

9844 Hedden Road
Evansville, IN 47725

164 Corporate Drive
Grantsville, MD 21536

3276 Springs Hill Road
Springs, PA 15562

104 Corporate Drive
Morgantown, WV 26501

5778 Glenn Highway
Cambridge, OH 43725

4970 Teays Valley Road
Suite K
Scott Depot, WV 25560

24 County Road 1956
Farmington, NM 87401